

P-CEP Homelessness Outreach Toolkit

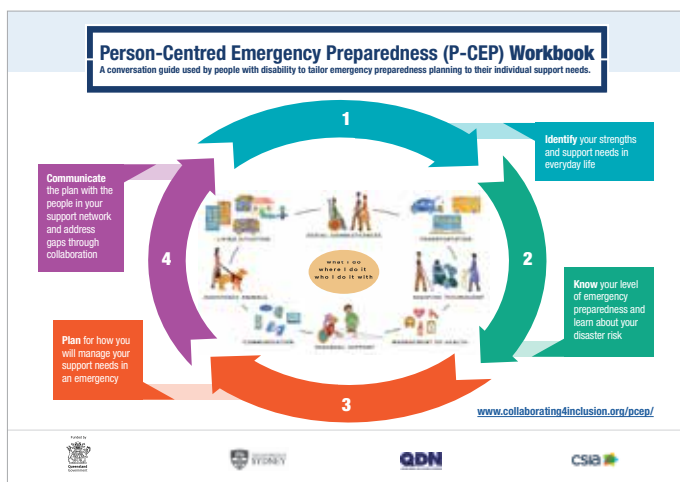
What is the learning need?

Emergency personnel need practical information and collaborative partnerships to enable emergency preparedness with people experiencing homelessness and the services that support them.

How does P-CEP Homelessness Outreach respond to that need?

Person-Centred Emergency Preparedness (P-CEP) Homelessness Outreach applies the P-CEP conceptual framework and process steps alongside 4 key actions to enable emergency preparedness in partnership with people experiencing homelessness.

P-CEP Framework



4 Key Actions:

- 1 Learn about the Lived Experience of Homelessness.
- 2 Use strategies for creating physical, psychological and emotional safety.
- 3 Enable access to information, physical safety, and material support.
- 4 Collaborate with service providers.

The P-CEP Homelessness Outreach Toolkit includes:



a conversation guide with outreach tips



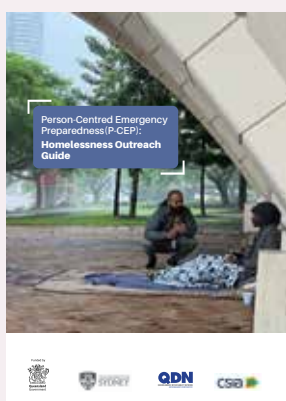
lived experience of homelessness stories



a learning module to help you get started

You will learn about the:

- **barriers** to enabling emergency preparedness with people experiencing homelessness.
- **preparedness, capabilities, and support needs** of people with lived experience of homelessness.
- **contributions of service providers** to enabling emergency preparedness with the people they support.
- **4 actions** you can take to increase emergency preparedness in partnership with people experiencing homelessness and the services that support them.



To view the P-CEP Homelessness Outreach Guide:

<https://collaborating4inclusion.org/homelessness-and-disaster/p-cep-homelessness-outreach-guide/>



To view the Learning Module:

<https://collaborating4inclusion.org/homelessness-and-disaster/homelessness-and-disaster-learning-module/>



To view the Lived Experience of Homelessness stories:

<https://collaborating4inclusion.org/homelessness-and-disaster/lived-experience-of-homelessness/>

Funding: This project was proudly supported by the Queensland Government through the Queensland Resilience and Risk Reduction Fund (QRRRF) and the Department of Treaty, Aboriginal and Torres Strait Islander Partnerships, Communities and the Arts (TATSIPCA) (formerly Communities, Housing and Digital Economy).

It was led by the Centre for Disability Research and Policy (CDRP) at The University of Sydney and conducted in partnership with the Queenslanders with Disability Network (QDN) and the Community Services Industry Alliance (CSIA).

Funded by

